

7 Other Throughput – 2002/03

Discharges	Māori	Other	Pacific peoples	Total
Male	1,992	11,047	767	13,806
Female	4,145	16,054	1,193	21,392
Total	6,137	27,101	1,960	35,198

Price

Price	\$ 1,925
Price weight	0.7353

Admission type

	Number	%
Acute	13,975	39.7
Arranged	8,657	24.6
Elective	12,566	35.7

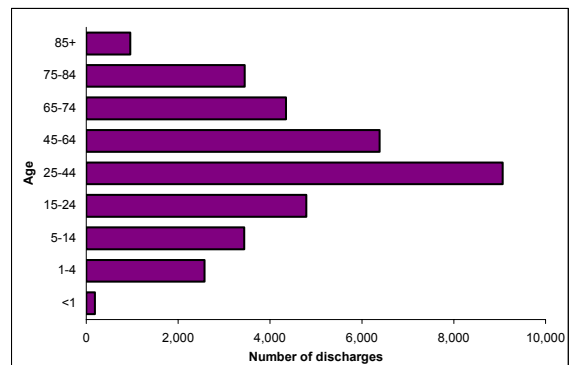
Discharge type

	Number	%
Routine	33,798	96.0
Self - indemnity signed	32	0.1
Self - no indemnity	84	0.2
Transfer	1,011	2.9
Died	265	0.8
Other	8	0.0

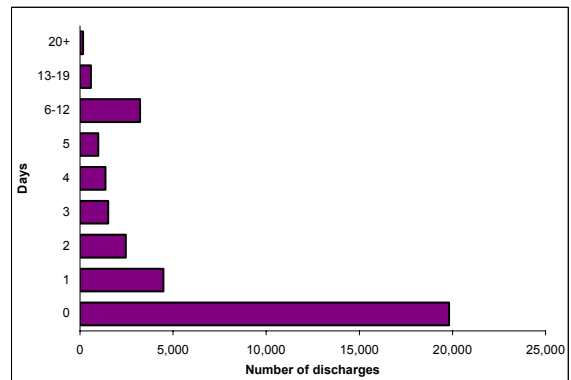
Length of Stay

	Days
Untruncated average	1.9
Truncated average	1.8
Truncated average - daycases excluded	4.3
Minimum	0
Maximum	63
Percentage day case	57.2

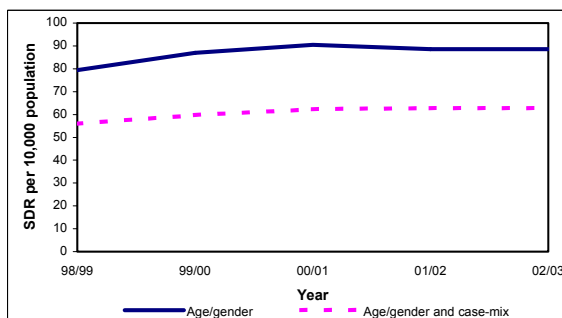
Age distribution



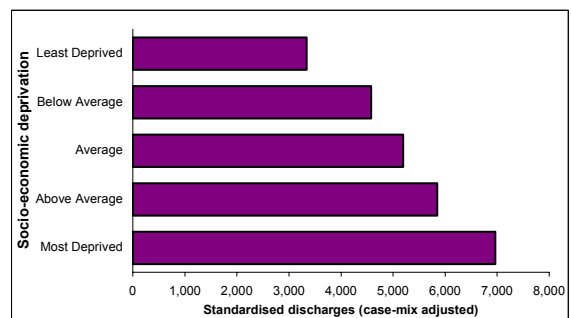
Length of Stay



Standardised discharge rates, by year



Discharges by socio-economic deprivation



Other Throughput - 2002/03

Discharges by provider

Provider	Throughput				Inpatient Length of Stay			Day Cases	
	2002/03		Raw percentage change		Truncated ALOS	ALOS Ratio*	Median	Raw Percentage	Day Case Ratio**
	Raw	Case-mix adjusted	2000/01 to 2001/02	2001/02 to 2002/03					
Northland	1,209	659	-17.3	7.8	3.0	0.986	2	59.6	0.97
Waitemata	1,612	1,314	0.2	7.8	4.2	0.989	3	33.7	1.05
Auckland	6,284	5,179	0.3	-0.6	4.6	1.010	3	64.6	1.01
Counties Manukau	1,932	2,027	2.9	1.5	4.4	0.979	3	17.1	0.71
Waikato	5,033	3,223	-3.1	3.5	4.8	1.039	4	65.9	0.96
Lakes	444	286	11.7	-13.6	3.8	1.000	2	56.8	1.08
Bay of Plenty	1,573	1,302	4.1	-2.7	4.6	0.991	3	54.0	1.11
Tairāwhiti	229	165	-12.6	-3.0	3.8	1.034	2	50.5	1.01
Taranaki	1,071	611	2.4	-1.7	3.2	0.900	2	70.9	1.09
Hawkes Bay	1,797	1,141	3.9	4.2	4.0	0.983	2	67.6	1.03
MidCentral	973	663	-3.0	-10.3	3.7	1.029	2	51.8	1.02
Whanganui	525	359	-7.4	16.9	3.9	1.003	2	56.9	0.96
Capital and Coast	2,587	1,894	-4.9	4.3	4.2	1.006	3	65.6	1.02
Hutt	594	426	4.5	-18.1	3.8	1.007	2	45.7	1.05
Wairarapa	197	124	13.8	8.2	3.5	1.009	2	42.4	0.92
Nelson Marlborough	1,632	760	13.9	-6.7	3.3	0.942	2	79.3	1.04
West Coast	182	103	14.7	-6.7	3.5	1.014	2	63.8	1.03
Canterbury	3,716	3,302	-1.2	-4.0	4.6	1.018	3	38.8	0.96
South Canterbury	443	289	1.9	1.6	3.4	1.006	2	56.3	1.05
Otago	1,979	1,382	-10.5	8.9	4.0	0.946	3	62.5	0.97
Southland	668	440	-14.5	4.9	3.4	0.993	2	62.9	1.04
Private Providers	518	234	125.0	#	1.6	0.956	1	99.0	1.05
New Zealand	35,198	25,882	-1.1	1.9	4.3	1.000	2	57.2	1.00

Notes:

- 1 Data source: NMDS public hospital data maintained by NZHIS (NZ Health Information Service). The data was extracted from the NMDS on 6 January 2004.
 - 2 Data are filtered to exclude certain cases (e.g. well babies, transfers). See Appendix 2 for the full list of cases.
 - 3 Time period covered - 12 months ending 30 June 2003.
 - 4 Case-mix adjusted discharges are based on Victorian cost weights modified by the Ministry of Health for deriving 2002/03 national hospital reference prices with DHBs.
 - 5 ALOS = Average length of stay. Note: excludes all day cases.
 - 6 Figures for 2002/03 exclude records from some private hospitals who had not submitted data to the NMDS by 6 January 2004.
- * ALOS values in bold type indicate that the provider ALOS is significantly shorter than the overall national ALOS, after case-mix adjustment (99% confidence interval).
 Shaded cells indicate that the provider ALOS is significantly longer than the overall national ALOS, after case-mix adjustment (99% confidence interval).
- ** Percent day case values in bold type indicate that the provider percentage is significantly less than the overall national percentage, after case-mix adjustment (99% confidence interval).
 Shaded cells indicate that the provider percentage is significantly greater than the overall national percentage, after case-mix adjustment (99% confidence interval).

Other Throughput 2002/03

Discharges by DHB region

DHB Region	Throughput					Inpatient Length of Stay			Day Cases	
	Discharges 2002/03	Raw		Case-mix adjusted		Truncated ALOS	ALOS Ratio**	Median	Raw Percentage	Day Case Ratio***
		Percentage change 2000/01 to 2001/02	Percentage change 2001/02 to 2002/03	Discharges 2002/03	SDR*					
Northland	1,502	-9.9	5.6	981	0.86	3.5	1.003	2	57.7	0.94
Waitemata	3,049	-3.6	2.2	2,329	0.86	4.1	0.990	3	54.1	1.02
Auckland	2,755	-1.8	-3.2	2,296	0.92	4.4	0.999	3	49.9	1.02
Counties Manukau	3,432	7.6	4.2	2,946	1.12	4.4	0.983	3	50.5	0.97
Waikato	3,655	-3.2	1.3	2,467	1.09	4.5	1.021	3	60.7	0.97
Lakes	1,212	3.5	13.3	716	1.03	4.7	1.038	3	73.2	1.00
Bay of Plenty	2,212	4.1	-2.1	1,623	1.14	4.7	0.993	3	63.3	1.05
Tairāwhiti	450	-10.7	50.5	313	0.89	4.7	1.069	2	66.0	0.99
Taranaki	1,231	1.0	-1.9	849	1.15	4.2	0.965	2	66.3	1.04
Hawkes Bay	1,894	3.2	3.4	1,303	1.20	4.1	1.002	2	64.3	1.01
MidCentral	1,191	-2.1	7.3	839	0.74	3.9	1.031	2	56.7	1.03
Whanganui	728	-8.5	13.3	521	1.10	4.3	1.031	3	61.3	0.99
Capital and Coast	1,580	-7.4	-1.5	1,230	0.82	4.2	1.003	3	59.3	1.02
Hutt	1,082	4.6	-7.2	776	0.92	3.7	0.996	2	59.8	1.03
Wairarapa	397	-2.3	4.4	241	0.87	3.5	0.996	2	62.0	0.99
Nelson Marlborough	1,743	12.2	-4.1	892	1.04	3.3	0.955	2	75.5	1.03
West Coast	327	5.5	0.6	229	1.01	4.9	1.053	3	65.0	1.03
Canterbury	3,386	-1.4	-3.5	3,009	1.06	4.7	1.019	4	38.5	0.98
South Canterbury	531	1.0	-4.9	378	1.00	3.9	1.000	2	56.4	1.04
Otago	1,863	-9.1	11.1	1,241	1.07	3.9	0.956	3	64.0	0.99
Southland	978	-15.6	10.6	702	1.05	3.4	0.961	2	59.3	0.96
New Zealand	35,198	-1.1	1.9	25,882	1.00	4.3	1.000	2	57.2	1.00

Notes:

- 1 Data source: NMDS public hospital data maintained by NZHIS (NZ Health Information Service). The data was extracted from the NMDS on 6 January 2003.
 - 2 Data are filtered to exclude certain cases (e.g. well babies, transfers). See Appendix 2 for the full list of cases.
 - 3 Time period covered - 12 months ending 30 June 2003.
 - 4 Case-mix adjusted discharges are based on Victorian cost weights modified by the Ministry of Health for deriving 2002/03 national hospital reference prices with DHBs.
 - 5 SDR = Standardised discharge ratio.
 - 6 ALOS = Average length of stay. Note: excludes all day cases.
 - 7 Figures for 2002/03 exclude records from some private hospitals who had not submitted data to the NMDS by 6 January 2004.
- * Rates in bold type indicate that the DHB region rate is significantly less than the overall national rate (99% confidence interval).
 Shaded cells indicate that the DHB region rate is significantly greater than the overall national rate (99% confidence interval).
- ** ALOS values in bold type indicate that the DHB region ALOS is significantly shorter than the overall national ALOS, after case-mix adjustment (99% confidence interval).
 Shaded cells indicate that the DHB region ALOS is significantly longer than the overall national ALOS, after case-mix adjustment (99% confidence interval).
- *** Percent day case values in bold type indicate that the DHB region percentage is significantly less than the overall national percentage, after case-mix adjustment (99% confidence interval).
 Shaded cells indicate that the DHB region percentage is significantly greater than the overall national percentage, after case-mix adjustment (99% confidence interval).

Other Throughput 2002/03

