

4. Total Throughput

Total Throughput - 1999/00

Discharges	Māori	Other	Pacific Peoples	Total
Male	36,686	205,976	14,896	257,558
Female	53,540	268,443	22,372	344,355
Total	90,226	474,419	37,268	601,913

Price

Price	\$ 2,528
Price weight	1.0538

Admission type

	Number	%
Acute	331,759	55.1
Arranged	134,622	22.4
Elective	135,532	22.5

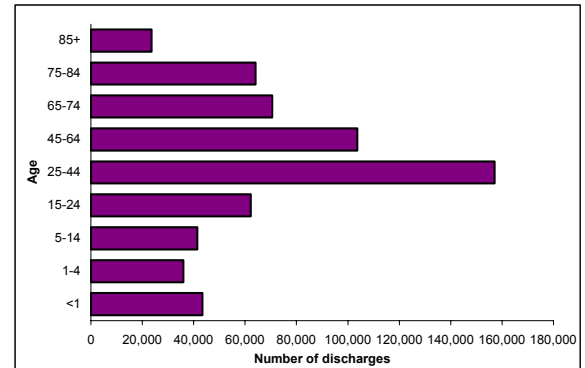
Discharge type

	Number	%
Routine	559,771	93.0
Self - indemnity signed	1,199	0.2
Self - no indemnity	1,724	0.3
Transfer	30,079	5.0
Died	8,749	1.5
Other	391	0.1

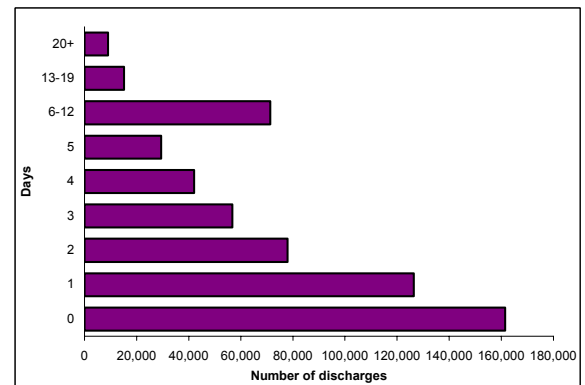
Length of Stay

	Days
Untruncated average	3.3
Truncated average	3.1
Truncated average - daycases excluded	4.3
Minimum	0
Maximum	145
Percentage day case	27.2

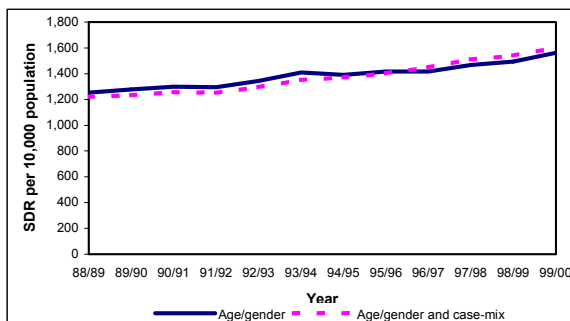
Age distribution



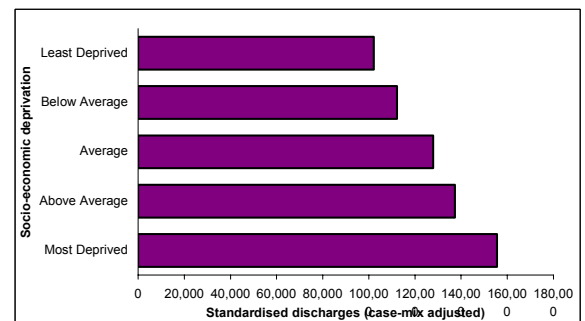
Length of Stay



Standardised discharge rates, by year



Discharges by socio-economic deprivation



Total Throughput - 1999/00

Discharges by provider

Provider	Throughput				Length of Stay			Day Cases	
	1999/00		Raw percentage change		Truncated ALOS	ALOS Ratio*	Median	Raw Percentage	Day Case Ratio**
	Raw	Case-mix adjusted	1997/98 to 1998/99	1998/99 to 1999/00					
Northland	23,422	19,820	-3.3	5.0	2.7	1.015	2	25.3	0.92
Waitemata	41,050	31,120	16.2	28.5	2.6	0.921	1	33.9	1.25
Auckland	81,046	115,703	1.0	2.2	3.6	1.000	2	29.4	1.00
Counties Manukau	63,223	59,506	14.4	11.3	2.8	0.902	1	29.0	1.16
Waikato	53,511	61,236	-0.5	6.0	3.4	1.021	2	27.0	0.93
Lakes	15,804	13,294	0.6	0.1	2.9	1.031	1	26.0	0.98
Bay of Plenty	31,211	28,200	4.6	5.8	3.0	0.997	2	25.1	0.98
Tairāwhiti	8,267	7,141	-9.4	-2.5	2.8	1.031	1	25.9	0.88
Taranaki	17,169	15,372	3.7	-1.4	2.8	1.043	2	28.0	0.92
Hawkes Bay	24,012	21,641	2.3	1.7	2.8	1.002	1	33.0	1.05
MidCentral	21,878	22,714	-3.6	-2.1	3.5	1.072	2	20.0	0.82
Whanganui	11,034	10,043	-3.5	6.7	2.9	0.989	1	30.3	0.98
Capital and Coast	35,001	44,921	-3.9	0.1	3.3	1.050	2	24.0	0.86
Hutt	19,656	17,135	7.2	13.6	2.6	1.002	1	28.4	0.98
Wairarapa	5,528	4,726	5.5	2.9	2.8	0.955	2	22.2	1.09
Nelson Marlborough	16,872	15,249	3.5	11.3	2.7	1.008	1	33.5	0.98
West Coast	4,981	4,384	-5.7	1.5	3.2	0.989	2	20.0	0.89
Canterbury	65,532	78,068	2.2	3.0	3.7	1.052	2	26.5	1.00
South Canterbury	8,376	7,907	4.5	-6.1	2.9	0.983	1	30.9	1.03
Otago	26,223	32,081	-2.8	3.8	3.5	1.011	2	26.0	0.95
Southland	13,766	13,122	-0.1	-2.3	2.8	0.932	2	25.9	1.01
Private Providers	14,351	10,932	22.8	23.3	2.5	1.068	2	20.8	0.89
New Zealand	601,913	634,315	2.7	5.7	3.1	1.000	2	27.2	1.00

Notes:

1 Data source: NMDS public hospital data maintained by NZHIS (NZ Health Information Service). The data was extracted from the NMDS on 1 February 2001.

2 Data are filtered to exclude certain cases (e.g. well babies, transfers). See Appendix 2 for the full list of cases.

3 Time period covered - 12 months ending 30 June 2000.

4 Case-mix adjusted discharges are based on Victorian cost weights modified by the HFA for deriving 1999/00 contracted prices with HHSs.

5 ALOS = Average length of stay.

6 Totals for private providers exclude cases for Queen Elizabeth Hospital in Rotorua from September 1 1998.

* A shaded ratio implies that the provider ALOS is significantly different from the national ALOS, after case-mix adjustment.

** A shaded ratio implies that the provider percentage is significantly different from the national percentage, after case-mix adjustment.

"_" indicates no cases in 1997/98 and/or 1998/99 and/or 1999/00.

"#" indicates a percentage change of 1,000 percent or more.

Total Throughput 1999/00

Discharges by DHB region

DHB Region	Throughput					Length of Stay			Day Cases	
	Raw			Case-mix adjusted		Truncated ALOS	ALOS Ratio**	Median	Raw Percentage	Day Case Ratio***
	Discharges 1999/00	Percentage change 1997/98 to 1998/99	Percentage change 1998/99 to 1999/00	Discharges 1999/00	SDR*					
Northland	25,910	-1.9	5.2	25,762	0.90	3.0	1.013	2	24.9	0.92
Waitemata	64,041	7.8	16.2	63,413	0.98	2.9	0.956	1	32.6	1.14
Auckland	55,043	4.0	5.7	62,700	1.05	3.3	0.994	2	28.0	1.04
Counties Manukau	64,260	11.5	9.8	64,620	1.10	2.8	0.927	1	30.0	1.13
Waikato	50,861	0.6	3.7	54,913	0.97	3.3	1.009	2	25.5	0.92
Lakes	17,249	-2.3	4.2	16,783	0.93	3.2	1.015	2	27.8	0.98
Bay of Plenty	34,064	5.5	5.4	34,193	0.97	3.2	0.986	2	25.9	0.98
Tairāwhiti	9,000	-8.4	1.4	8,825	0.91	3.0	1.024	2	25.7	0.89
Taranaki	18,853	4.2	0.0	18,649	1.00	3.0	1.033	2	27.4	0.93
Hawkes Bay	25,582	3.3	2.3	26,407	0.96	3.1	1.004	1	31.5	1.02
MidCentral	22,706	-1.7	-0.4	25,014	0.90	3.5	1.051	2	21.9	0.85
Whanganui	12,754	-3.2	7.0	13,058	1.05	3.2	0.988	2	28.8	0.96
Capital and Coast	30,442	-3.3	1.2	34,037	0.92	3.1	1.062	2	23.4	0.86
Hutt	20,655	5.1	9.4	20,794	0.97	2.8	1.024	1	29.1	0.98
Wairarapa	6,951	4.7	3.7	7,208	1.02	3.0	0.996	2	24.3	1.00
Nelson Marlborough	18,238	6.6	10.4	18,808	0.92	2.9	0.999	1	32.4	0.98
West Coast	6,094	-3.2	4.2	6,283	1.13	3.5	1.010	2	22.4	0.90
Canterbury	68,406	1.6	3.9	75,506	1.08	3.5	1.053	2	26.4	0.99
South Canterbury	9,150	3.0	-3.7	10,013	1.05	3.2	1.011	1	29.9	1.02
Otago	25,957	-1.8	5.1	30,146	1.05	3.4	1.018	2	25.7	0.95
Southland	15,697	2.0	-0.7	17,182	1.01	3.1	0.935	2	25.8	0.99
New Zealand	601,913	2.7	5.7	634,315	1.00	3.1	1.000	2	27.2	1.00

Notes:

- 1 Data source: NMDS public hospital data maintained by NZHIS (NZ Health Information Service). The data was extracted from the NMDS on 1 February 2001.
 - 2 Data are filtered to exclude certain cases (e.g. well babies, transfers). See Appendix 2 for the full list of cases.
 - 3 Time period covered - 12 months ending 30 June 2000.
 - 4 Case-mix adjusted discharges are based on Victorian cost weights modified by the HFA for deriving 1999/00 contracted prices with HHSs.
 - 5 SDR = Standardised discharge ratio.
 - 6 ALOS = Average length of stay.
 - 7 All figures exclude cases for Queen Elizabeth Hospital in Rotorua from September 1 1998.
- * A shaded number implies that the DHB region rate is significantly different from the national rate.
 ** A shaded number implies that the DHB region ALOS is significantly different from the national ALOS, after case-mix adjustment.
 *** A shaded ratio implies that the DHB region percentage is significantly different from the national percentage, after case-mix adjustment.
 "-" indicates no cases in 1997/98 and/or 1998/99 and/or 1999/00.
 "##" indicates a percentage change of 1,000 percent or more.

Total 1999/2000

