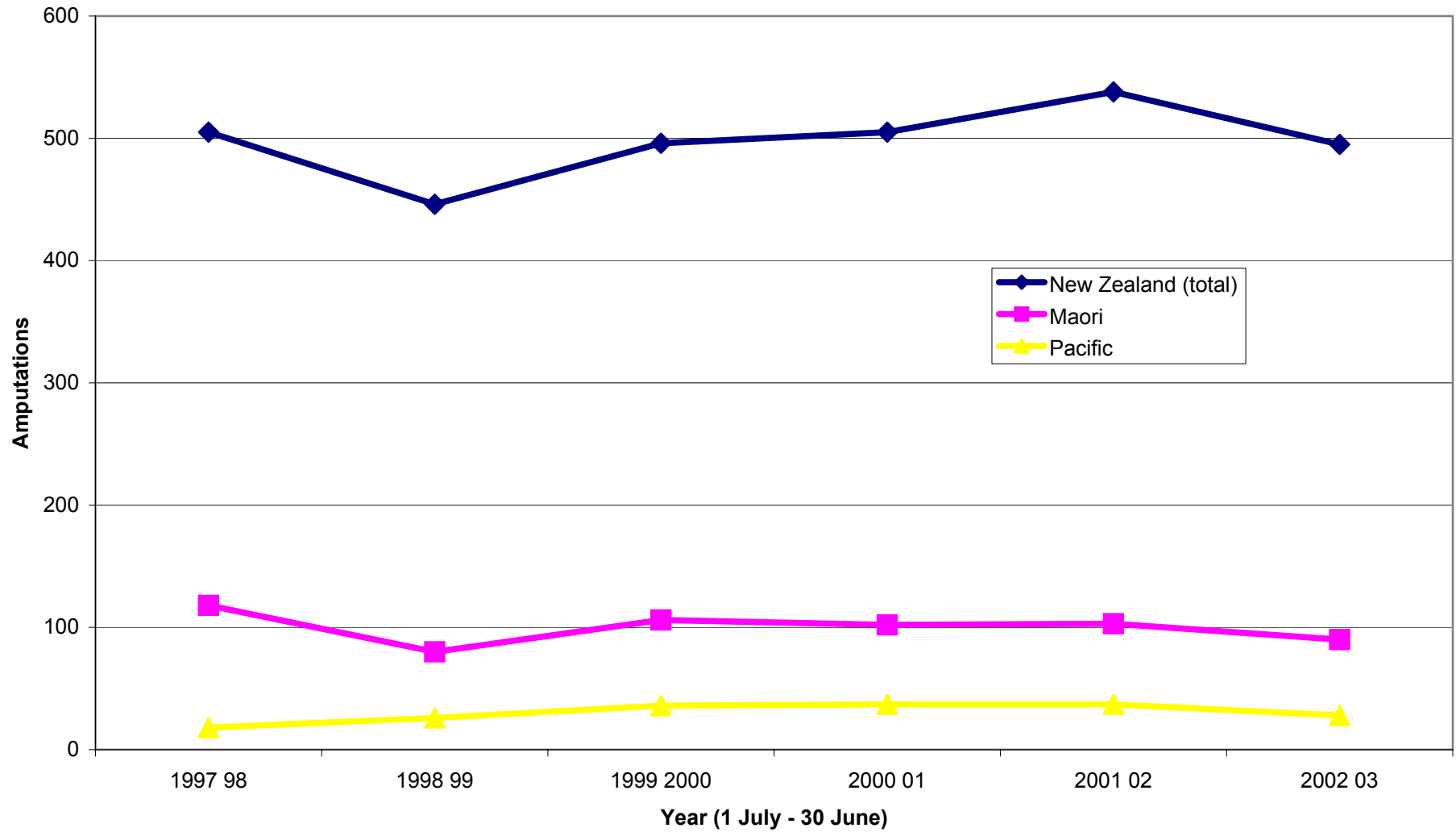
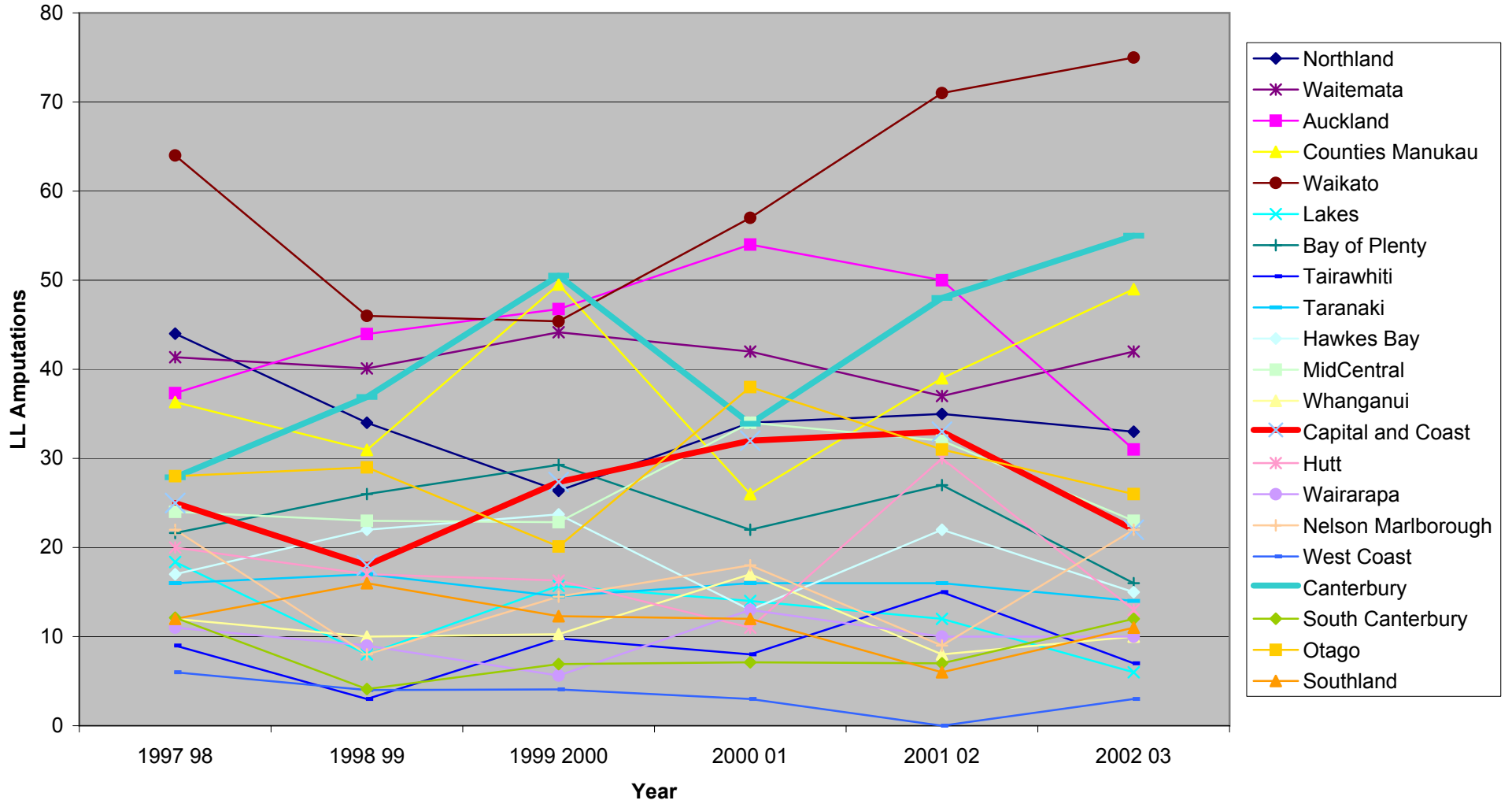


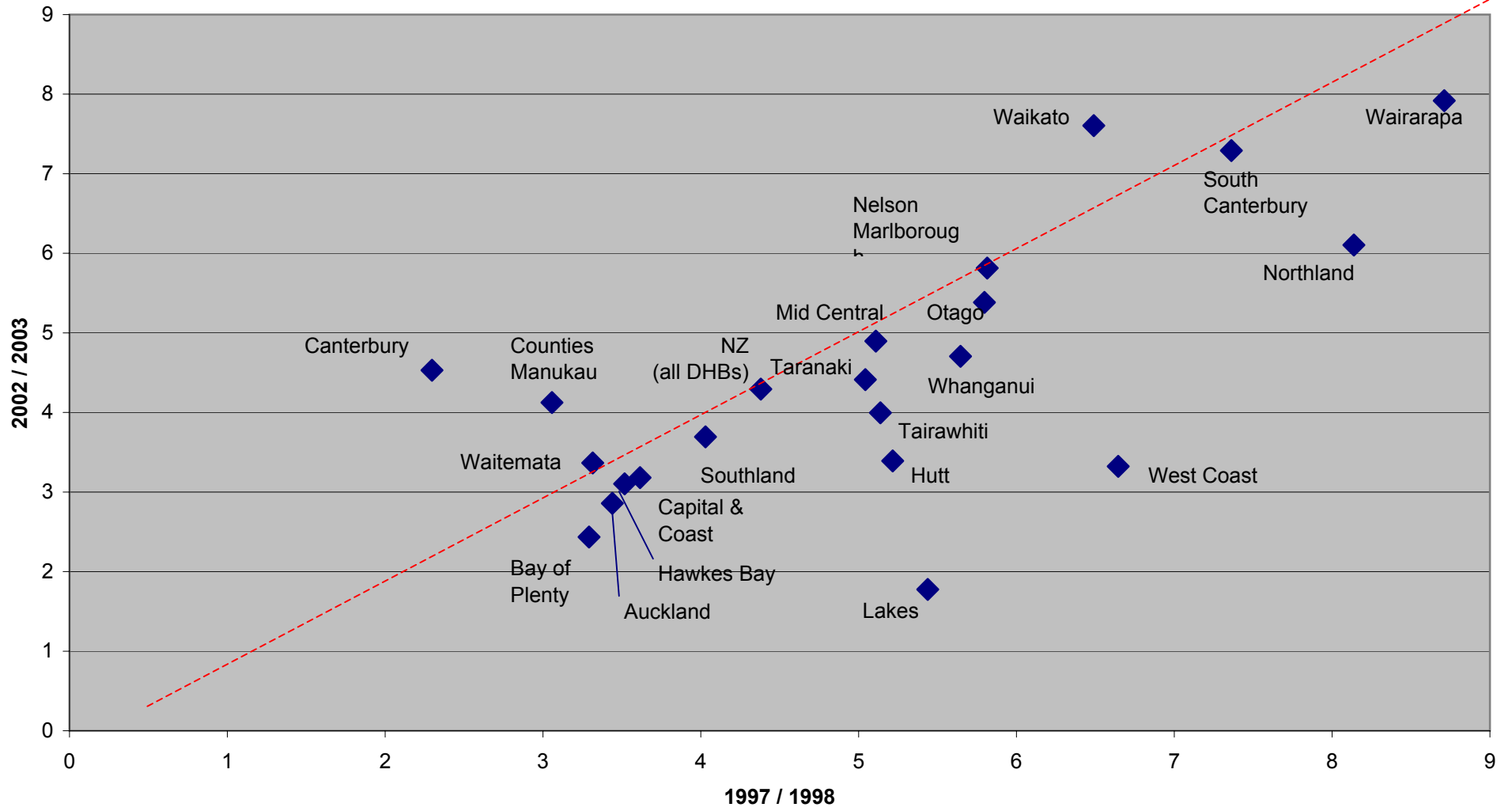
Lower Limb Amputations in People with Diabetes



Lower Limb Amputations in PWD



Lower Limb Amputation Rates in PWD



Standardised discharge ratios (SDRs) by DHB region for:
Lower limb amputation in people with diabetes in 2002/2003

[BACK TO INDEX](#)

Lower limb amputation diabetic

DHB Region	Standardised Discharge Ratio			
	Total	Māori	Pacific peoples	Other
Northland	1.39	1.99	—	0.93
Waitemata	0.80	—	—	0.80
Auckland	0.72	—	0.68	0.71
Counties Manukau	1.04	1.86	0.98	0.84
Waikato	1.76	1.86	—	1.72
Lakes	0.43	—	—	—
Bay of Plenty	0.54	1.06	—	0.37
Tairāwhiti	0.97	—	—	1.77
Taranaki	0.96	—	—	0.90
Hawkes Bay	0.71	—	—	0.84
MidCentral	1.08	—	—	1.20
Whanganui	1.15	—	—	1.24
Capital and Coast	0.81	—	—	0.84
Hutt	0.82	2.15	—	0.64
Wairarapa	1.71	—	—	1.64
Nelson Marlborough	1.27	—	—	1.39
West Coast	—	—	—	—
Canterbury	1.00	1.61	—	0.97
South Canterbury	1.49	—	—	1.45
Otago	1.15	—	—	1.23
Southland	0.83	—	—	0.96
New Zealand	1.00	1.11	0.99	0.98

DHB Region	Raw numbers				Expected numbers			
	Total	Māori	Pacific peoples	Other	Total	Māori	Pacific peoples	Other
Northland	33	17	2	14	24	9	0	15
Waitemata	42	4	3	35	52	5	4	44
Auckland	32	4	5	23	44	5	7	32
Counties Manukau	49	15	10	24	47	8	10	29
Waikato	75	18	2	55	43	10	1	32
Lakes	6	2	1	3	14	5	0	9
Bay of Plenty	16	8	0	8	30	8	0	22
Tairāwhiti	7	1	0	6	7	4	0	3
Taranaki	14	2	1	11	15	2	0	12
Hawkes Bay	15	2	0	13	21	5	0	16
MidCentral	23	1	1	21	21	3	0	17
Whanganui	11	2	0	9	10	2	0	7
Capital and Coast	23	0	4	19	29	3	3	23
Hutt	13	5	0	8	16	2	1	12
Wairarapa	10	2	0	8	6	1	0	5
Nelson Marlborough	22	0	0	22	17	1	0	16
West Coast	3	0	0	3	4	0	0	4
Canterbury	55	6	0	49	55	4	1	50
South Canterbury	12	1	0	11	8	0	0	8
Otago	26	0	0	26	23	1	0	21
Southland	11	0	0	11	13	2	0	11
New Zealand	498	90	29	379	498	81	29	388

Notes:

- 1 Data source: NMDS public hospital data, maintained by the NZ Health Information Service (NZHIS).
- 2 Time period covered - 12 months to 30 June 2003 (Provisional data).
- 3 Discharges are for people from each DHB region of domicile.
- 4 Standardised discharge ratio is the ratio of observed to expected discharge rates. Expected rates are calculated on the age structure of the population with diabetes in each DHB region, with ethnicity also used for total rates.
- 5 All diabetic populations are based on medium series population projections for 2002/03 (assuming medium levels of mortality, fertility and migration), and are based on the 2001 census, and projected 2003 type I and type II prevalence rates for diabetes by age and ethnicity.
- 6 Ratios in bold type indicate that the standardised DHB region and ethnic rate is significantly less than the overall national rate (99% confidence interval).
- 7 Shaded cells indicate that the standardised DHB region and ethnic rate is significantly greater than the overall national rate (99% confidence interval).
- 8 "—" implies that the number of discharges are less than five.