

Exercise Control Overview

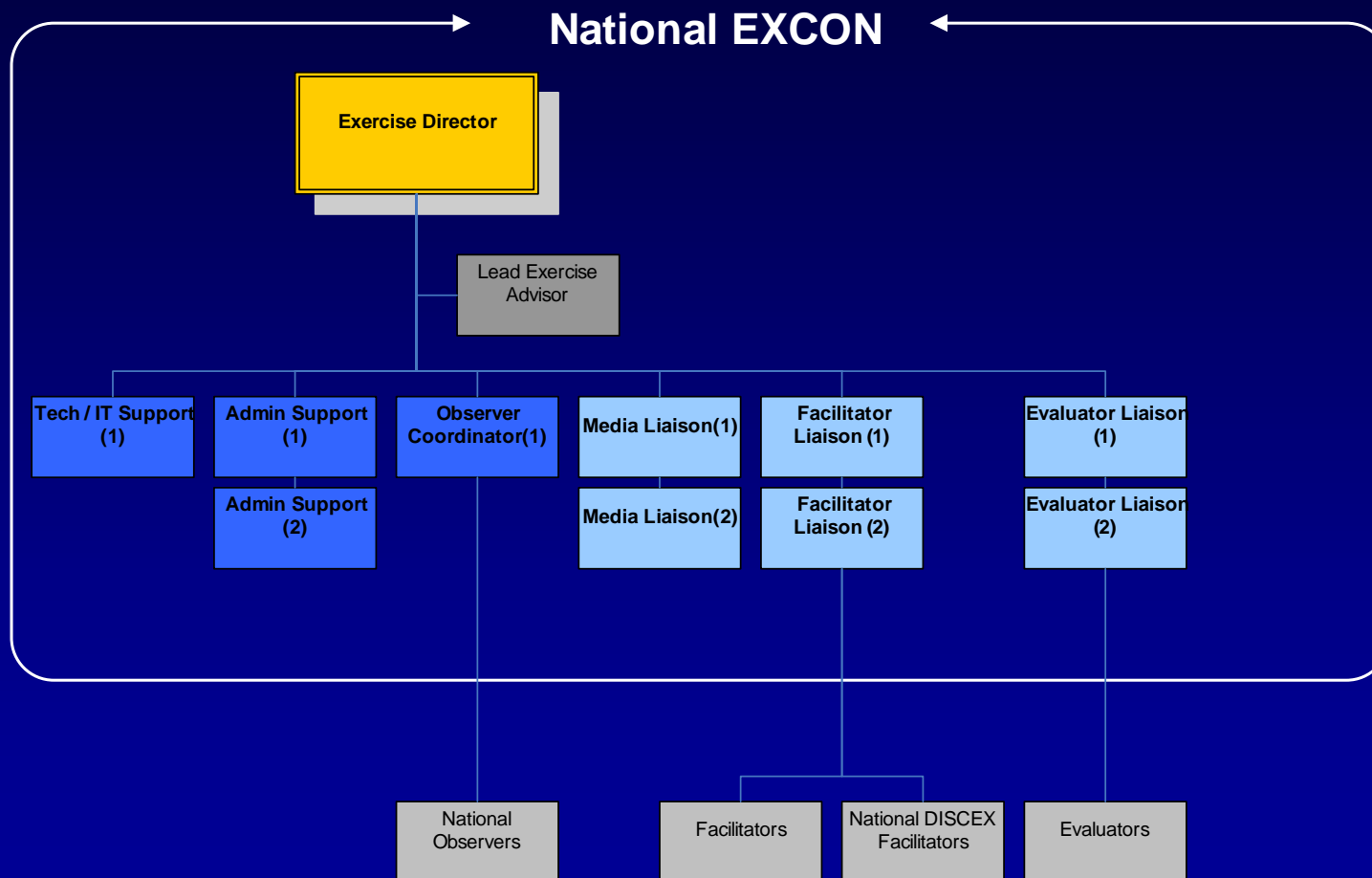
Introduction

- Roles and responsibilities
- Structure
- Location
- Briefings and debriefings
- Contact details

Roles and Responsibilities

- Supervise the flow of the Exercise
- Resolve any problems/issues arising
- Deliver messages to Exercise Players
- Monitor and evaluate Exercise Play and Exercise Control
- Track the progress of the Exercise
- Coordinate national observers

National EXCON Structure



National EXCON Structure

- Exercise Director
- Lead Exercise Advisors
- Media Liaison
- Facilitator Liaison
- Evaluator Liaison
- Observer Coordinator
- Administrative Support and IT Support

Local Exercise Control

- Facilitator(s)
- Evaluator(s)
- Support / Admin / Other

Location

- National EXCON
 - 1 The Terrace, Wellington
- Local EXCON
 - Regional EOC (where applicable)
 - DHB EOC
 - PHU EOC
 - Other?

Briefings & Debriefings

- Briefings will be held before the start of each Exercise Day
 - Time: 0800 - 0830
- Debriefings will be held at the end of each Exercise Day
 - Time: 1800
 - Duration: Approx. 30 minutes

Other Information

- Layout
- Access
- Identification
- Health & Safety
- Real emergency & actual event
- Catering
- Real media enquiries

Contact Details

- Prior to the start of the Exercise Days:
 - Lennox Love, Facilitator & Evaluator Coordinator
Lennox_Love@moh.govt.nz
- On Exercise Days:
 - Facilitator and Evaluator Liaison contact details to be provided in the next session



www.moh.govt.nz/pandemicinfluenza