

## **Regional Briefings**

23-29 March 2007

Nikki Hooper  
Ministry of Health

# Background

- Planning began almost 2 years ago
- Culminated in development of New Zealand Influenza Pandemic Action Plan (NZIPAP)
- NZIPAP approved by Cabinet in September 2006
- With plan now in place it is time to exercise it
- Exercise Makgill – November 2006

# Exercise Cruickshank

- Whole-of-government influenza pandemic exercise
- Health is lead agency
- Will test the intersectoral response at all four stages of the NZIPAP
- Realism
- Combination of exercise types

# Lead agency responsibilities

Based on intersectoral exercise objectives and performance indicators:

- Coordinating NCMC and local intersectoral emergency operations centres (EOCs) and intersectoral activities
- Providing exercise controllers/facilitators, and evaluators at NCMC and EOCs
- Producing a final report on intersectoral components of exercise

# Exercise Management

- MoH holds overall responsibility for Exercise Cruickshank
- MoH represents the interests of the government sector
- KPMG engaged to assist MoH in planning and organising Exercise Cruickshank
- MoH has dedicated Exercise project team

# Exercise days and dates

**Exercise Cruickshank will be run over five days in May 2007.**

- Day 1 'Keep It Out' - Thursday 10 May
- Day 2 'Stamp It Out' - Wednesday 16 May
- Day 3 'Manage It' - Thursday 17 May
- Days 4 and 5 'Recover From It'

Local workshops Wednesday 23 May

National workshop Wednesday 30 May

# Why the name Cruickshank?

Named after Margaret Cruickshank, a key figure in the 1918-19 pandemic.

# Exercise Cruickshank

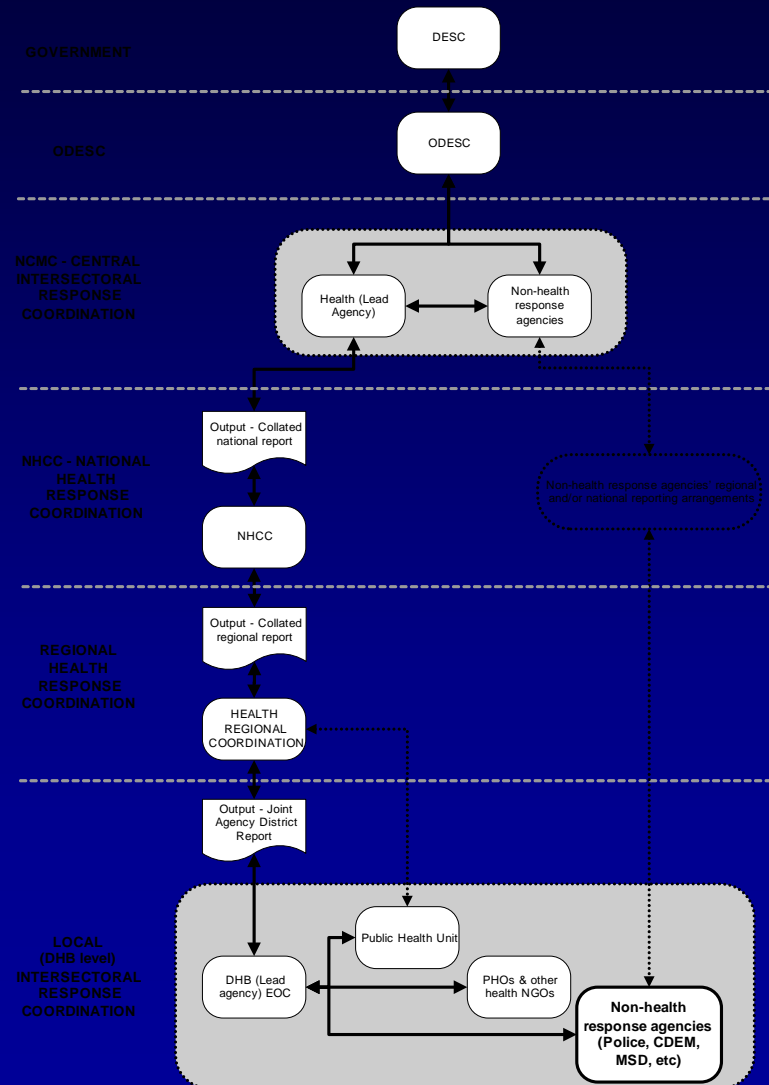
## Agencies involved

- ACC
- Ministry of Agriculture and Forestry
- Aviation Security Service of New Zealand
- Civil Aviation Authority
- Ministry of Civil Defence & Emergency Management
- Department of Corrections
- NZ Customs Service
- Ministry of Defence
- Ministry of Economic Development
- Ministry of Education
- NZ Fire Service
- New Zealand Food Safety
- Ministry of Foreign Affairs and Trade
- Industry Capability Network
- IRD
- Department of Internal Affairs
- Ministry of Justice
- Department of Labour
- Ministry of Pacific Island Affairs
- NZ Police
- Department of Prime Minister and Cabinet
- Ministry of Research Science and Technology
- Reserve Bank of New Zealand
- Ministry of Social Development
- Statistics New Zealand
- State Services Commission
- Ministry of Transport
- Te Puni Kokiri
- Tourism New Zealand
- Treasury

# Participating agency responsibilities

- Developing own exercise general instruction for participants
- Addressing own logistics
- Appointing own exercise facilitators, and evaluators to run and evaluate own response
- Identifying, preparing and debriefing exercise participants

# Reporting and communications



# Key documents

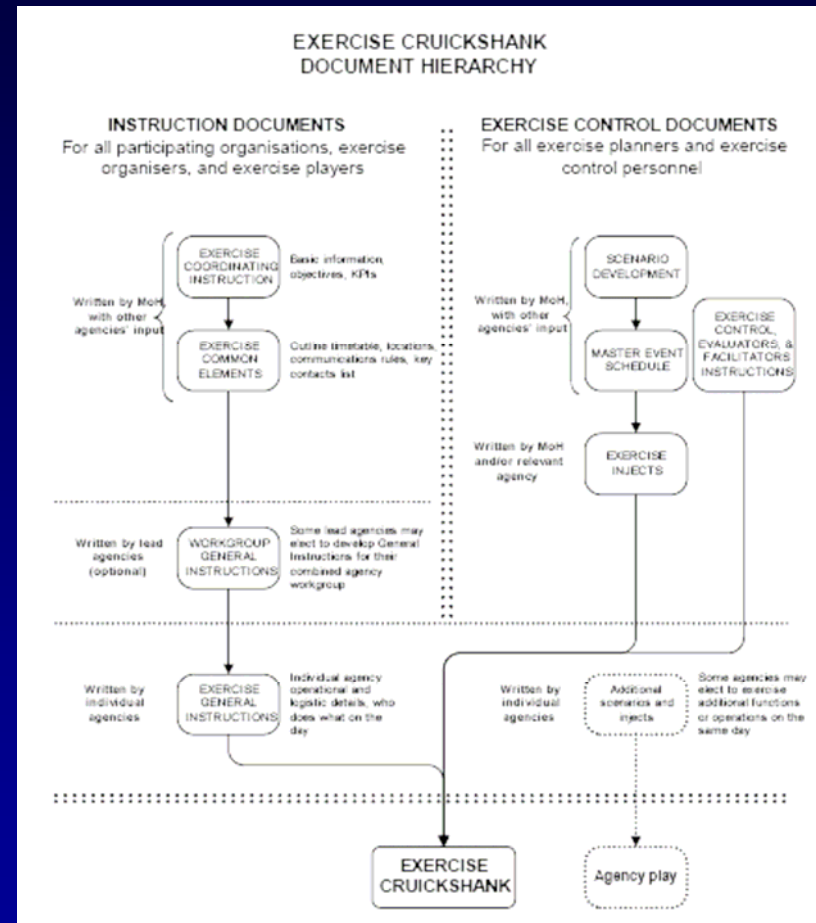
## Exercise Coordinating Instruction

- Sets the direction for Exercise Cruickshank
- Informs the planning and participation of relevant agencies
- Explains aims of the exercise and exercise assumptions
- Details objectives and key performance being exercised

# Key Documents

## Exercise Common Elements

- Outlines elements of exercise logistics common to all participating organisations
- Intended to assist participating organisations in developing the General instruction for their organisation



# Planning Process

The Ministry has engaged with the wider government sector through the Intersectoral Pandemic Group (IPG), which co-ordinates 11 work groups. These address critical areas of the national pandemic response, each led by a work group lead agency.

Work group	Work group lead agency
Health	Ministry of Health
Biosecurity	Ministry of Agriculture and Forestry
Law & Order & Emergency Services	NZ Police
Civil Defence Emergency Management	Ministry of Civil Defence & Emergency Management
Welfare	Ministry of Social Development
Education	Ministry of Education
Border	NZ Customs
External	Ministry of Foreign Affairs and Trade
Economy	Treasury
Infrastructure	Ministry of Economic Development
Workplaces	Department of Labour

# Work groups

- **Law & Order & Emergency Services**

Led by Police – also includes NZ Defence Force; NZ Fire Service; Ministry of Justice; Department of Corrections; Parole Board; Ministry of Civil Defence & Emergency Management (MCDEM); Child, Youth and Family; Ambulance NZ; Department of Prime Minister and Cabinet

- **Civil Defence Emergency Management (CDEM)**

Led by MCDEM – also includes Ministry of Civil Defence & Emergency Management (lead), Ministry of Health, Ministry of Economic Development, Ministry of Social Development, New Zealand Police, Ministry of Transport, Department of Prime Minister and Cabinet, New Zealand Defence Force

**Other agencies:**

CDEM Groups, local authorities, Local Government New Zealand, Fast Moving Consumer Goods (FMCG) sector representatives through the NZ Food and Grocery Council, the NZ Retailers Association, Retail Meat NZ, Fonterra, NZ Fruit and Vegetable Growers Federation

# Work groups

- **Welfare**

Led by MED with support from Ministry of Health; Ministry of Civil Defence & Emergency Management; Child, Youth and Family; Ministry of Agriculture and Forestry; Housing New Zealand Corporation; Accident Compensation Corporation; Te Puni Kokiri; Ministry of Education; Ministry of Tourism; Ministry of Foreign Affairs and Trade; Inland Revenue

- **Education**

Led by Ministry of Education with support from New Zealand Qualifications Authority, Education Review Office, New Zealand Teachers Council, Tertiary Education Commission, Career Services

**Other agencies:**

Early Childhood Education Services working party, schools working party, tertiary working party, 11 divisions of the Ministry of Education's National Office, four regional offices (serving 7 local and 49 district offices)

# Work groups

- **Border**

Led by Customs – also includes Ministry of Health, Ministry of Transport, Department of Labour – Immigration Service, Aviation Security Service, Maritime New Zealand, Civil Aviation Authority, Ministry of Foreign Affairs and Trade, Ministry of Agriculture and Forestry, New Zealand Defence Force, New Zealand Police, Ministry of Tourism, The Treasury, Department of Prime Minister and Cabinet.

- **External**

Led by Ministry of Foreign Affairs and Trade – also includes Department of Prime Minister and Cabinet, Ministry of Health, Ministry of Pacific Island Affairs, New Zealand Agency for International Development, New Zealand Defence Force, New Zealand Police, Ministry of Agriculture and Forestry, New Zealand Customs Service

# Work groups

- **Economy**

Led by Treasury with support from Reserve Bank, Inland Revenue Department, Ministry of Economic Development, Ministry of Social Development, Department of Labour, Ministry of Foreign Affairs and Trade, Ministry of Tourism, State Services Commission, Ministry of Civil Defence & Emergency Management, Ministry of Health

- **Infrastructure**

Led by Ministry of Economic Development with support from Ministry of Health, Ministry of Transport, Ministry of Civil Defence & Emergency Management

# Work groups

- **Workplace**

Led by Department of Labour with support from Ministry of Health, Ministry of Civil Defence & Emergency Management, Ministry of Economic Development, State Services Commission, Treasury, Business NZ and key sector networks, NZ Council of Trade Unions and affiliated unions

# Planning Process

## HSAG

- Ministry of Health (Chair)
- Maori Health organisation representative
- Public health management
- DHB emergency planners
- Designated officers – Medical Officer of Health/ public health physician
- Project manager and Secretariat

# Planning Process

## ISAG

- Ministry of Health (Chair)
- Defence
- MSD
- Police
- Fire
- Customs
- MAF
- DIA
- DPMC

# Exercise Themes

- Resource demand tracking
- Connectivity
- Consequential impacts
- Use of NHEP:ID and NZIPAP processes and systems

# National Intersectoral Objectives

- General objectives cover the first 3 exercise days:
  - To practice and validate the national and local decision-making and reporting arrangements and their interaction as identified in the NZIPAP
  - Agencies provide evidence that they can maintain a medium to long term response capability at national and local emergency operations centres
  - To practice and validate whole of government Public Information Management Systems and processes (PIMS)

## Keep It Out Objectives (3)

- To practice and validate the establishment and maintenance of border management initiatives
- To practice and validate the establishment of disease monitoring, surveillance and analysis processes
- To practice and validate national decision-making arrangements

# Stamp It Out Objectives (6)

- To practice and validate policies and procedures for the identification and treatment of cases
- To practice and validate policies and procedures for the identification, quarantine and post-exposure prophylaxis of contacts
- To identify options to ensure that the needs of people in quarantine at home are met

# Stamp It Out Objectives

- To collate, analyse and disseminate surveillance information on the spread of influenza in order to inform policy and operational decisions at a local, regional and national level
- To ensure critical supplies are available to support cluster control operations
- To practice and assess national and local decision-making arrangements concerning the size and scope of public health interventions to be implemented to control clusters

# Manage It Objectives (3)

- To establish community-based assessment centres and alternate means of providing specific pandemic influenza assessment and treatment services in urban and rural areas
- To identify how critical services in the fast-moving consumer goods, power, telecommunications, fuel, water and waste management, health, civil defence and emergency management and other sectors can be monitored and maintained with a projected 50 per cent staff absence for two weeks at the peak of the pandemic wave

# Manage It Objectives

- In each district health board catchment identify and document the responsibilities for and means of supporting sick people and their dependants who are unable to leave home

# Recover From It

- Discussion workshops
- Local 23 May
- National Agencies 23 May
- Combined national workshop 30 May
- Working with MCDEM

# Recover From It

## Discussion points

- Identify and document potential recovery roles and functions for key sectors, and their interdependencies
- Identify and document critical actions for central and local government in the initial months of recovery (noting that recovery starts in parallel with the response to the pandemic)

# Where to from here?

- Series of regional meetings in March
- **23 March** DHB workshop - Northern region
- **26 March** DHB workshop - Central region
- **27 March** DHB workshop - Midland region
- **28 March** DHB workshop - Southern region
- **29 March** National workshop – Central Government agencies
- **3 April 2007** DHB Communications Managers conference - Wellington
- **4 April 2007** Whole-of-Government Communications Managers conference - Wellington



[www.moh.govt.nz/pandemicinfluenza](http://www.moh.govt.nz/pandemicinfluenza)