



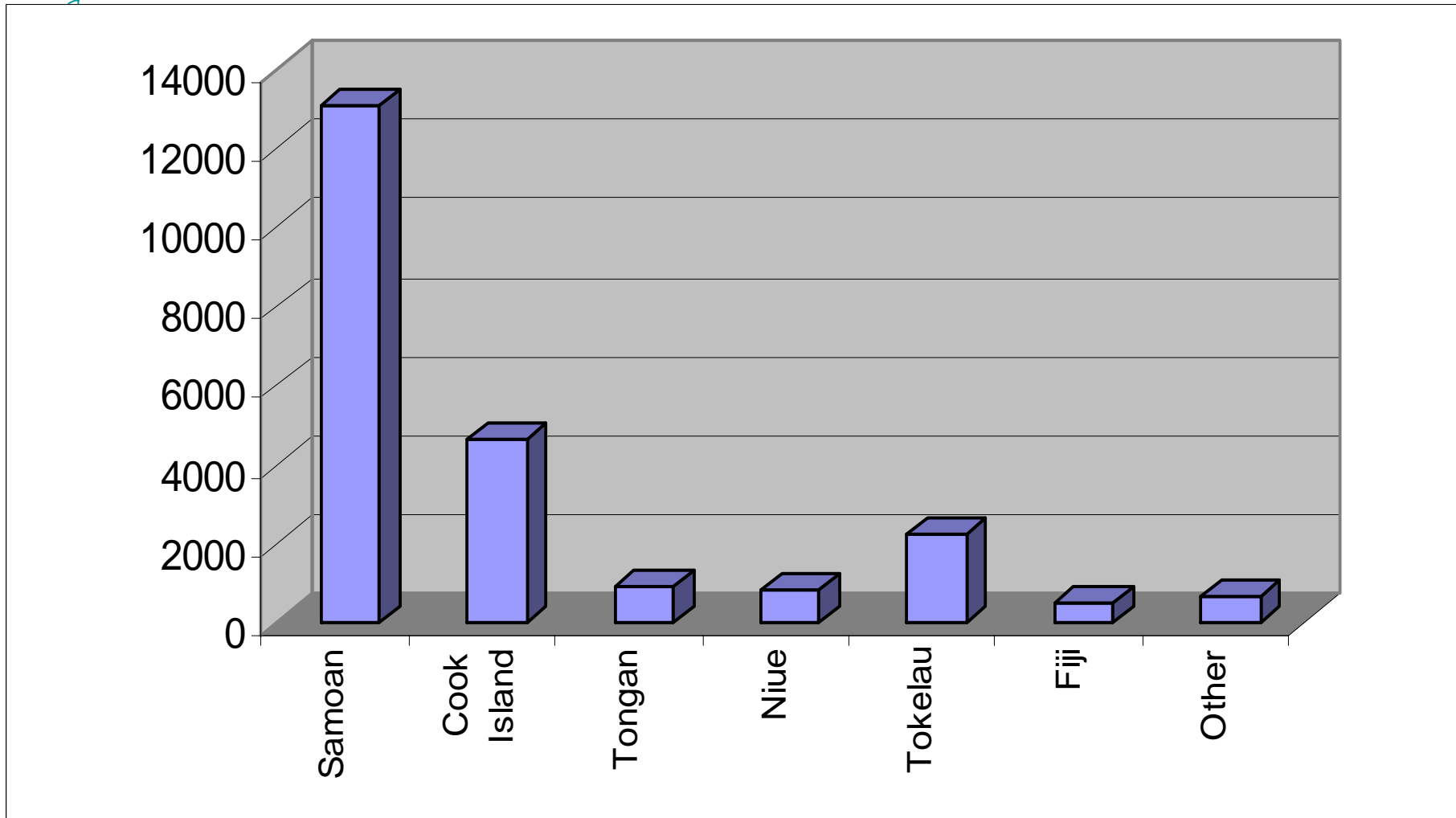
Capital & Coast
District Health Board
EUPONGAS KOTE KIVU ELAVUMBA

Pacific Health
in
Capital & Coast District Board
'Creating A Solid Foundation'

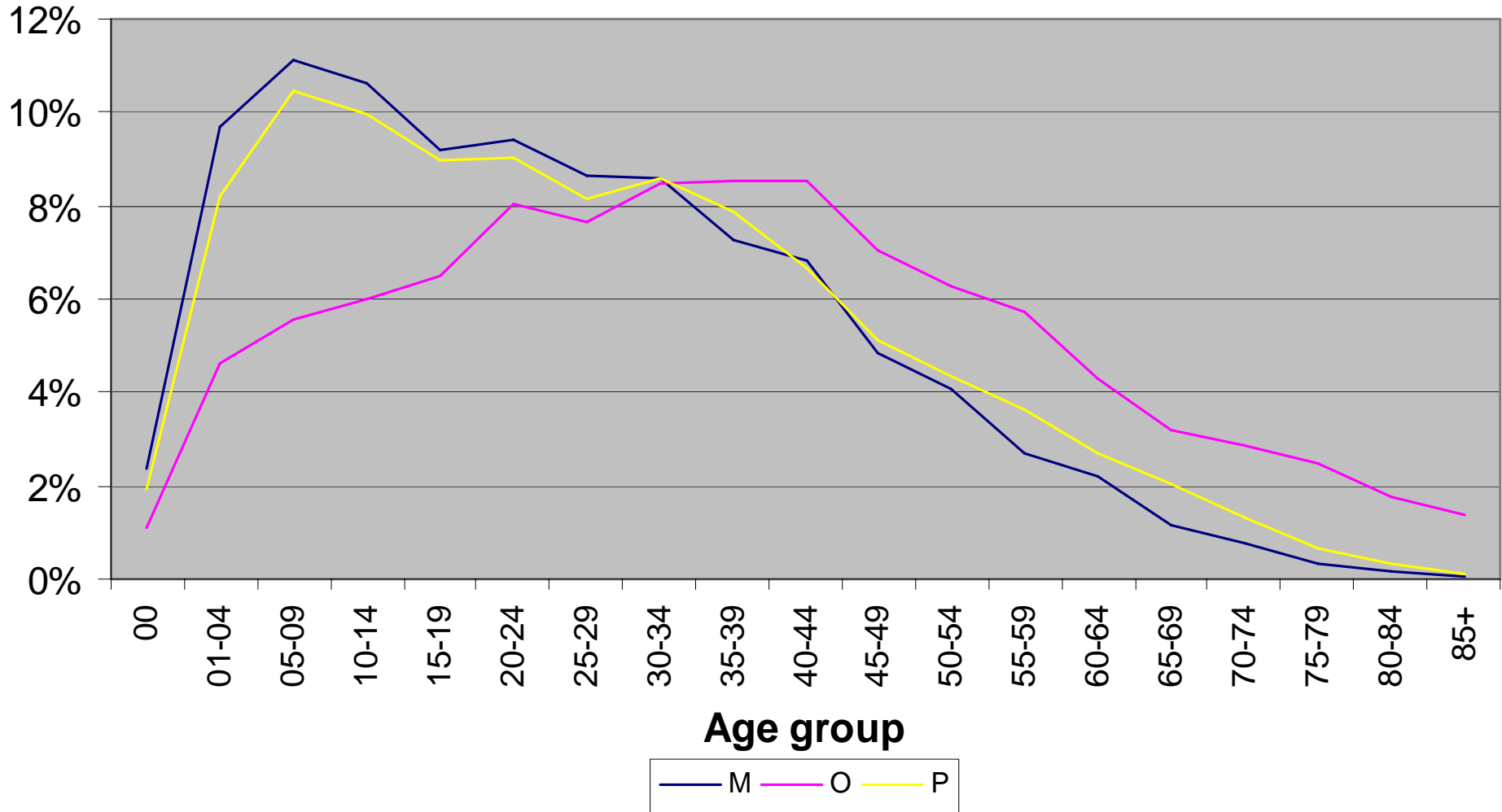
Strategic Overview

- Key Strategies for C&CDHB
 - Reducing Disparities
 - Reduce incidence & impact of chronic conditions
- Achieved through
 - Developing Workforce
 - Supporting/promoting healthy lifestyles
 - Working with communities
 - Integrated Care
 - Managing our money
 - Updating our hospitals

Pacific Population by Ethnicity



C&CDHB Pacific Population 2016



- Guided by key government policies
 - Pacific Health & Disability Action Plan
- CCDHB Pacific Action Plan (July 2003)

Pacific focus

- Whole of family
- Relationship Management
- Pacific Island communities
- Workforce
- Research & Development

Outcomes: Pan Pacific

How??

- Community
 - Working with each Pacific Island community
- Churches
- Smoke free programmes
 - Tu Tangata (Polyfest)
 - Specifically Wellington
 - Sports: Sevens, Kilikiti
 - Radio
- Integrated approach
 - Primary Care – eg MeNZB, other models of care
 - Inter sectoral/Multi sectoral
 - Cancer Society, WCC, PCC, NHF, RPH, Pharmac
- Developing new Pacific Provider – New Zealand Institute of Sport

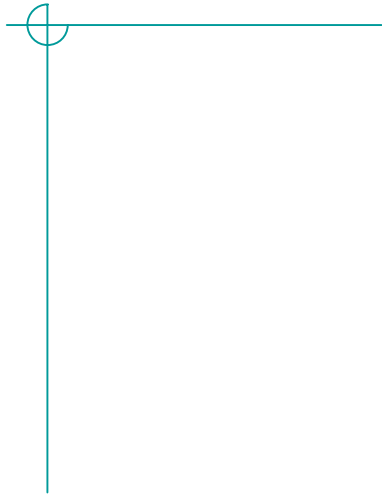
Successes

- Pacific Support Service
- Primary Care – HHS Link RN
- Mental Health
 - Joint initiative between HHS and NGO Pacific Children/Youth
- Pacific Youth
 - ‘Crossing Oceans- Chasing Dreams’
 - Pacific Youth report
- Integrated IT across all 5 Pacific Providers
- Providers in Community grown significantly
- Pacific Provider Accredited (1st in NZ)
- Joint Working Partnership with MPB
- Memorandum of Understanding - Tokelau

Work in Progress

- Pacific Workforce Plan (Oct 2003)
 - HHS and NGO staff
 - Implementing Action plan
- Pacific Youth Strategy (Nov 2005)
- Pacific Child/Youth RN – Community based (Q3)
- Smoke free Pilot (MoH)
- Breastfeeding Service (Dec 1, 2005)
- Diabetes – ‘The Unwanted Legacy’ (HHS)
- Communities
 - Commencing 2nd round free health checks all Pacific communities, includes churches

Questions.....





Memorandum of Understanding

Tokelau

and

C&CDHB

What is this!!!



Find a space!



Fakaofu



Fenuafala - Hospital



Nukunonu



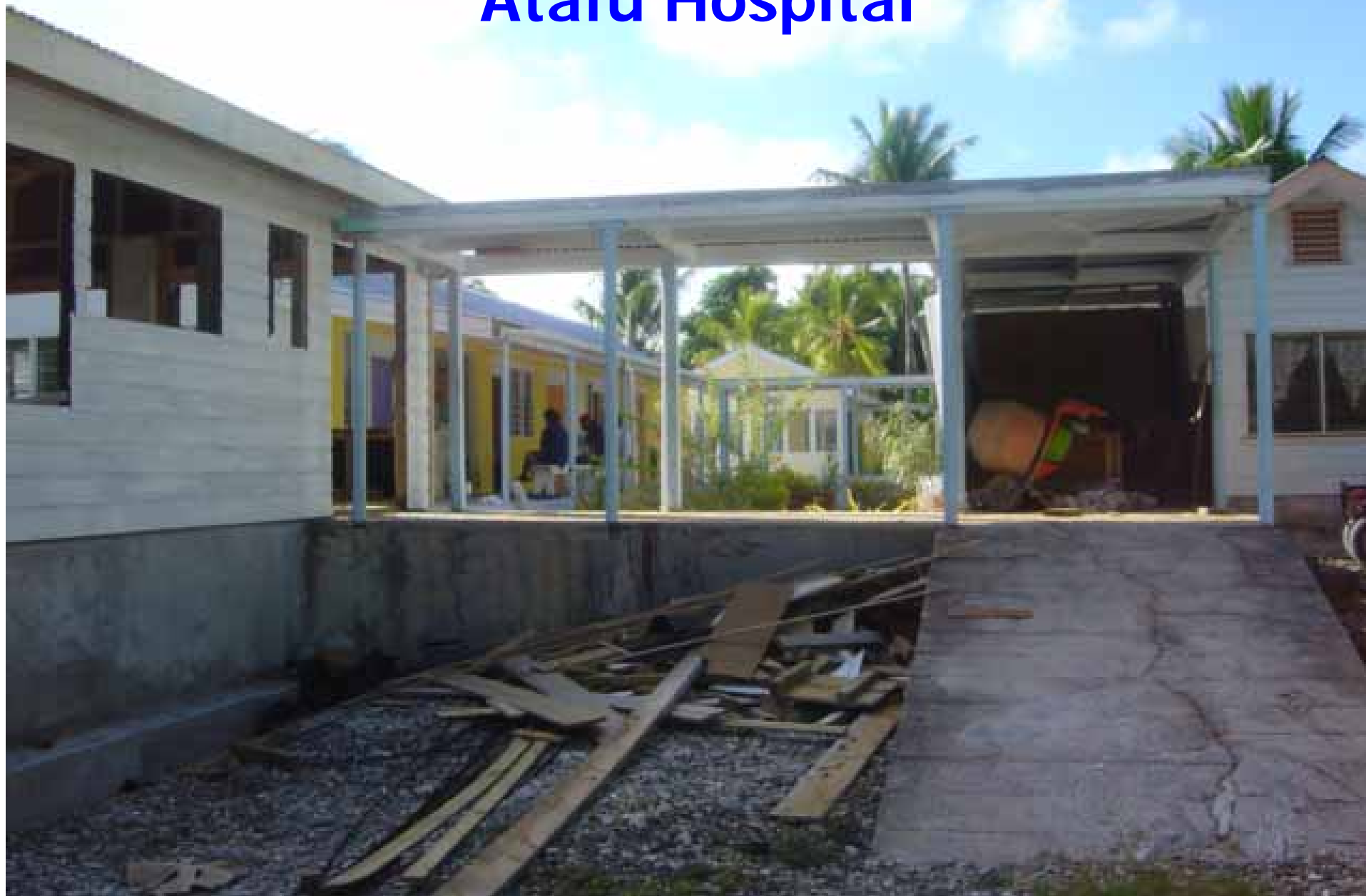
Nukunonu Hospital



Atafu



Atafu Hospital



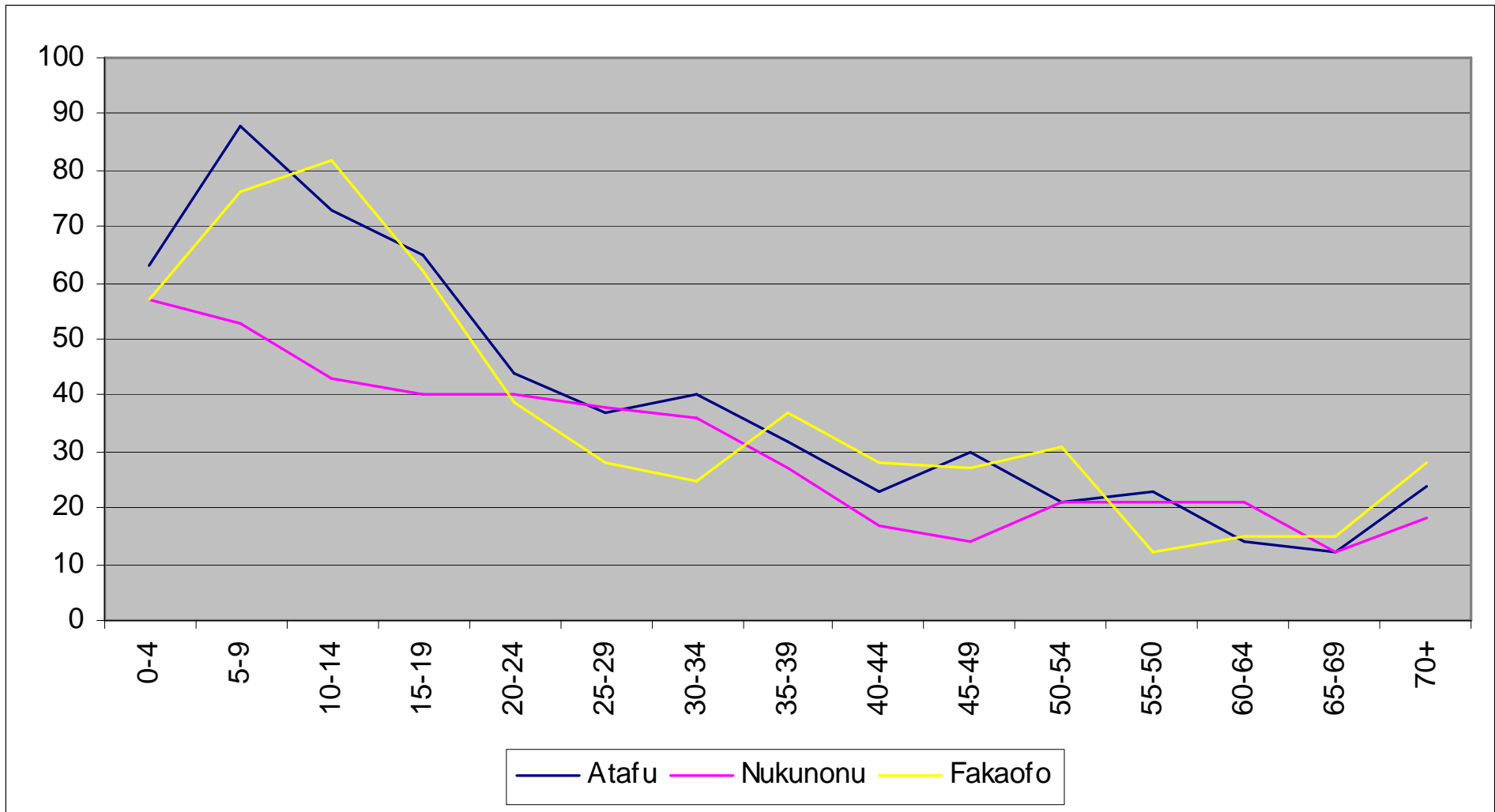
Climb up here!!!



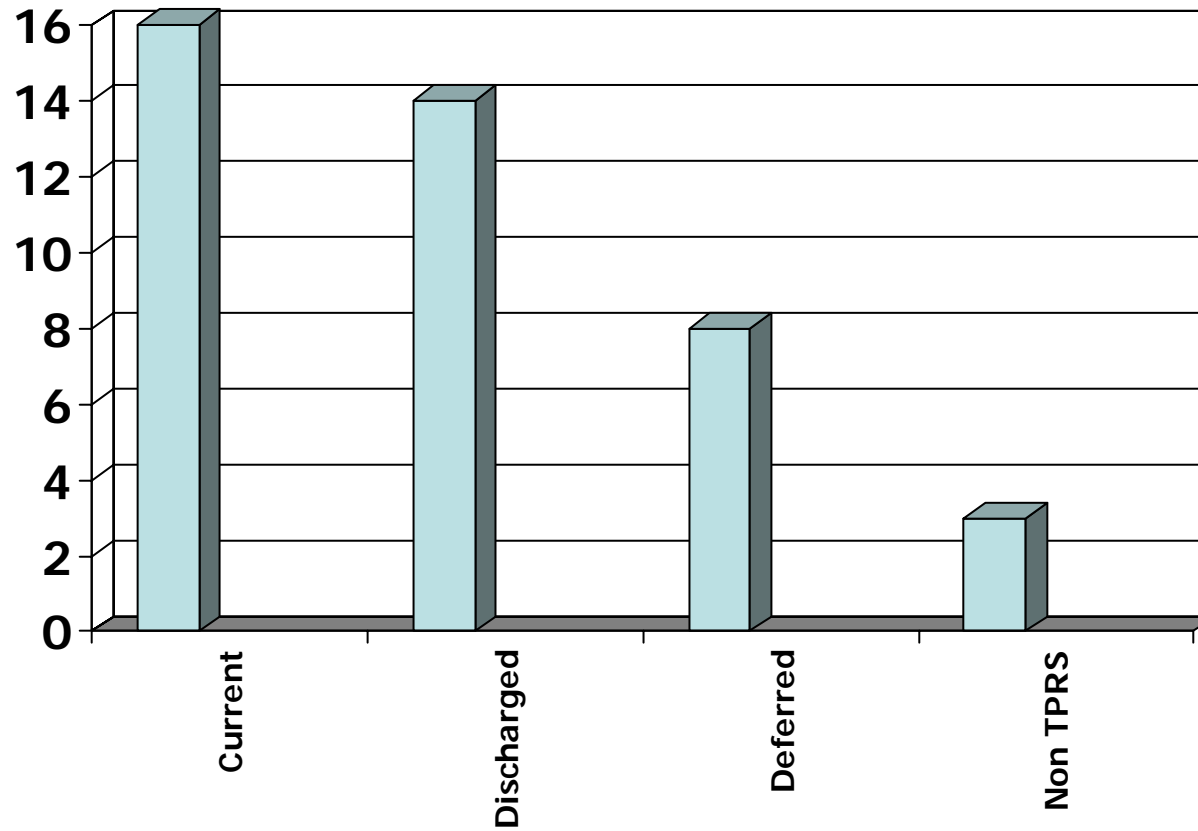
At least this one has Cabins!



Tokelau Population 2004



TPRS Patients Jan 1, 2005



Demographics

Gender = 19 F, 22 M

Age Range = 9m – 70yrs

Predominant Disease:

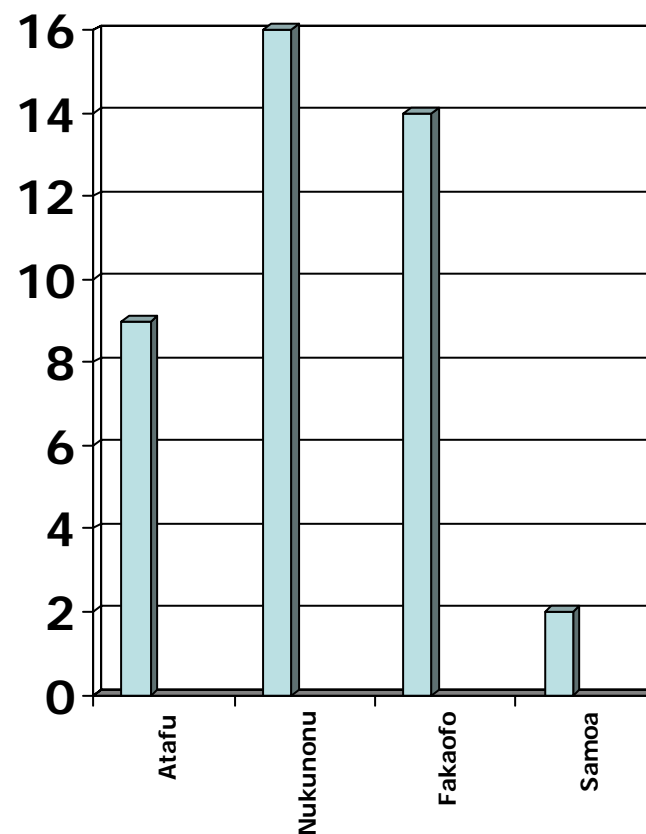
Diabetes: 15 (50%)

Cancer: 7 (23%)

CVS: 1

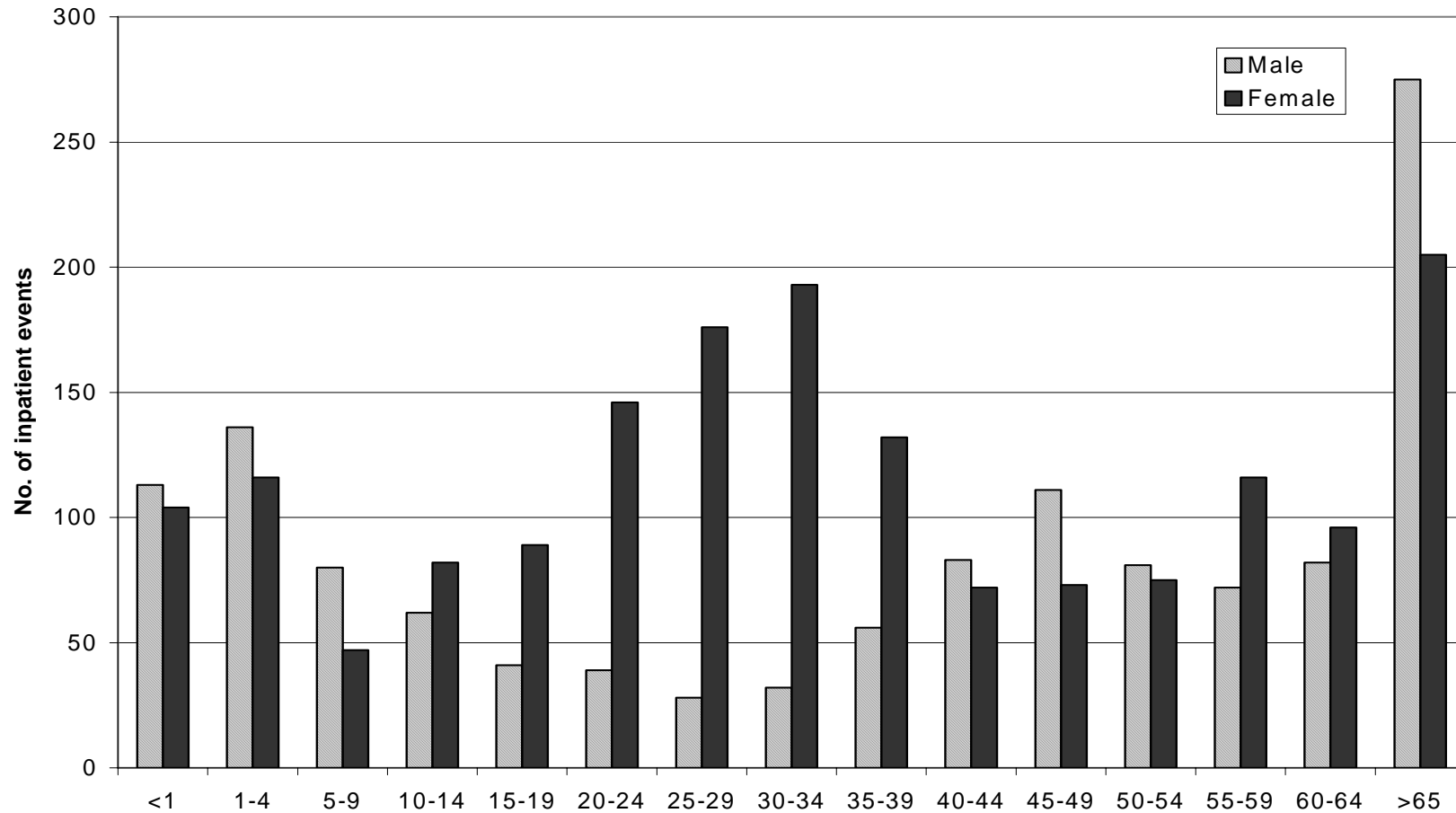
Eyes: 3

Other: 4

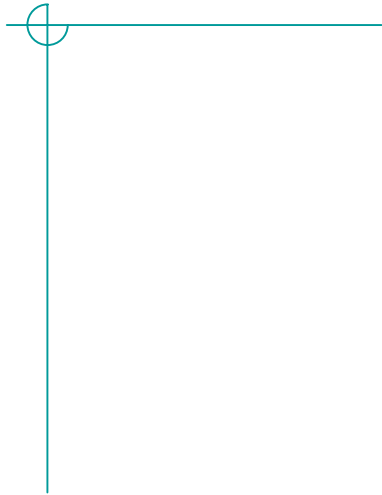


Pacific Support Service

Number of inpatient events by age and gender, PSS, July 2003 to June 2005



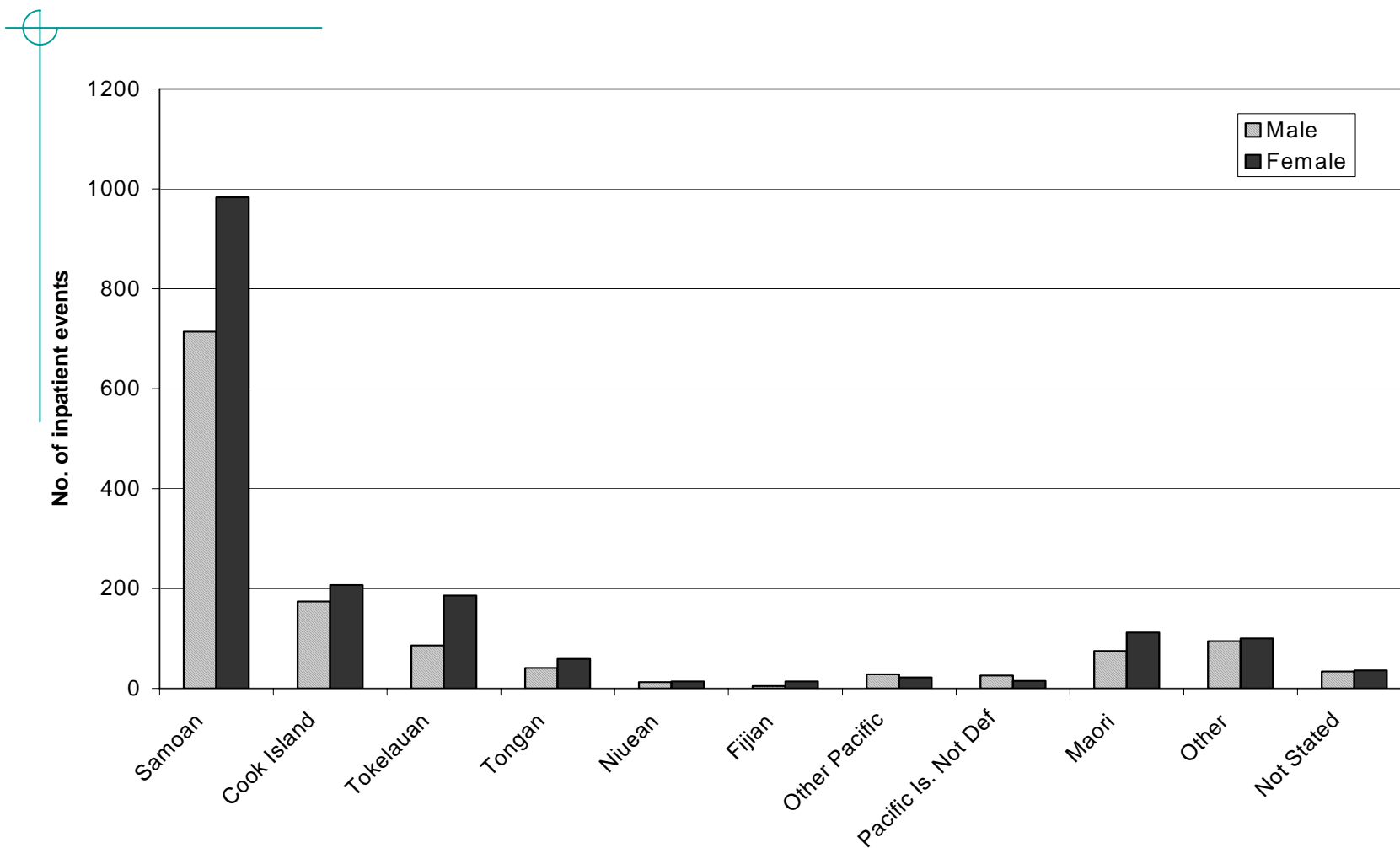
Questions.....



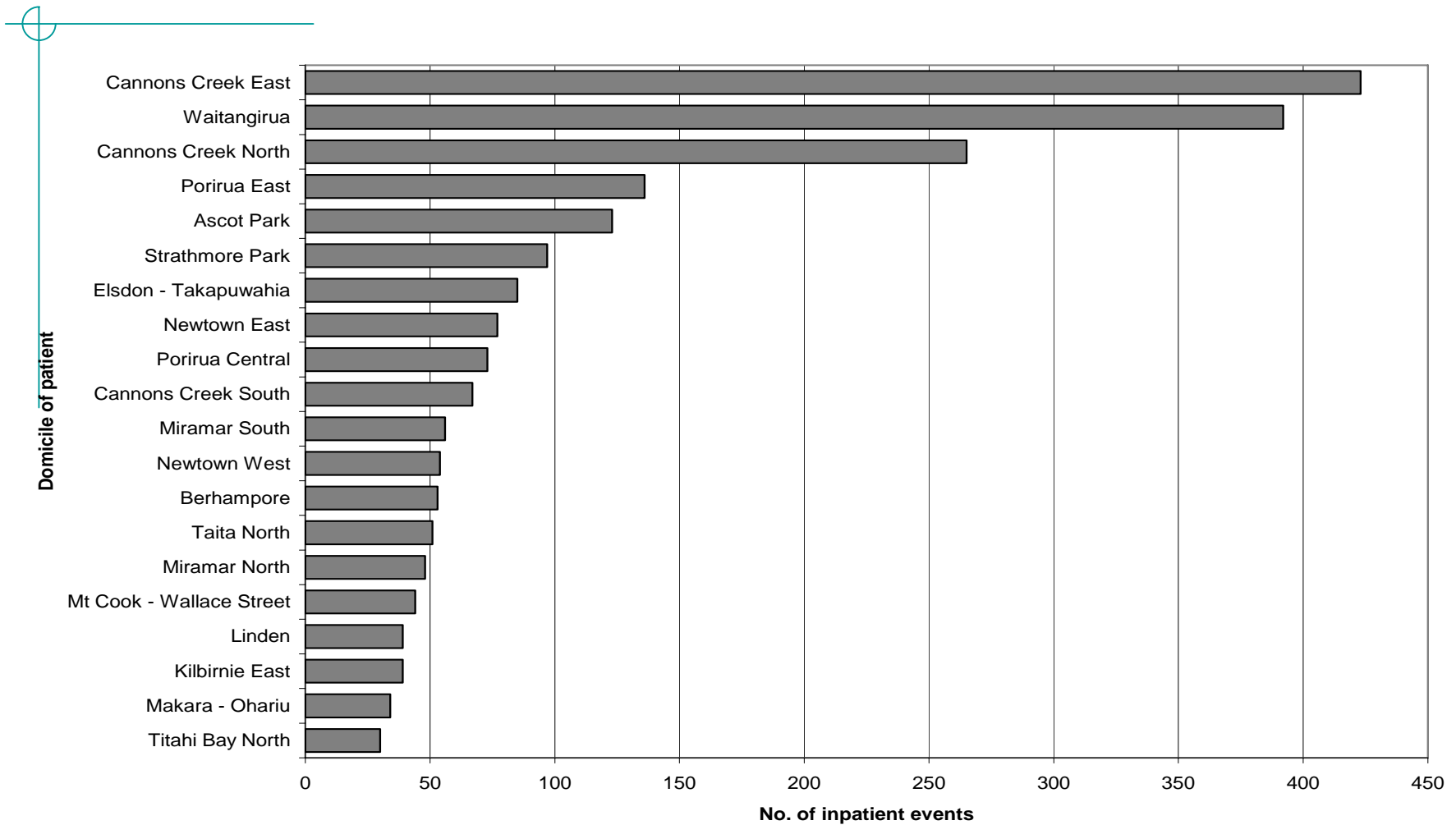
Pacific Support Service

'Creating a Solid Foundation'

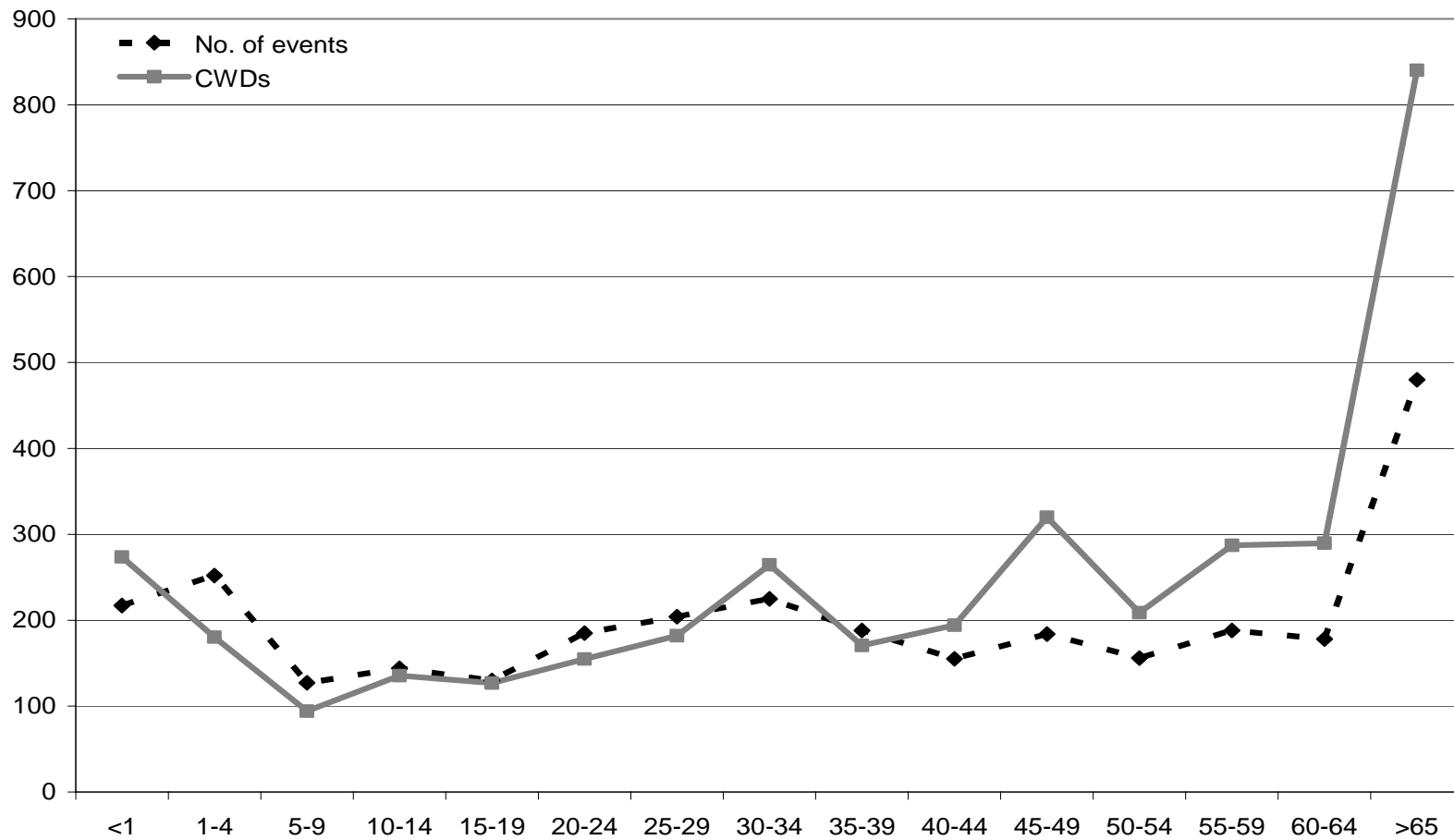
Number of inpatient events by ethnicity and gender, PSS, July 2003 to June 2005

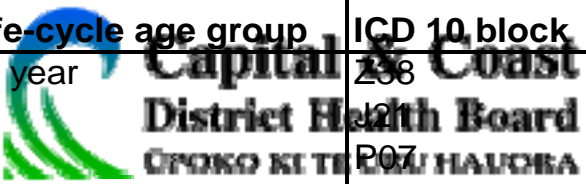


Domicile



Case Weight Discharge



Life-cycle age group	ICD 10 block	ICD 10 block description	No. of inpatient events
 <1 year	Z38	Liveborn infants according to place of birth	61
	J21	Acute bronchiolitis	38
	P07	Disorders related to short gestation and low birth weight, NEC	17
	P59	Neonatal jaundice	12
	Z76	Persons encountering health services in other circumstances	11
1-14 years	J21	Acute bronchiolitis	36
	J45	Asthma	36
	L02	Cutaneous abscess, furuncle and carbuncle	26
	J18	Pneumonia	25
	L03	Cellulitis	24
15-24 years	C41	Malignant neoplasm of bone and articular cartilage	14
	O21	Excessive vomiting in pregnancy	12
	O80	Singleton spontaneous delivery	11
	O99	Other maternal disease	11
	Z39	Post-partum care and examination	11
25-44 years	Z39	Post-partum care and examination	27
	E10	Type 1 diabetes mellitus	27
	O80	Singleton spontaneous delivery	26
	L03	Cellulitis	24
	O21	Excessive vomiting in pregnancy	20
45-64 years	E11	Type 2 diabetes mellitus	52
	F20	Schizophrenia	37
	I21	Acute myocardial infarction	34
	J18	Pneumonia	24
	I50	Heart failure	23
65+ years	J18	Pneumonia	35
	E11	Type 2 diabetes mellitus	32
	J44	Other chronic obstructive pulmonary disease	26
	I50	Heart failure	25
	I21	Acute myocardial infarction	21
Monday, 5 November 2007 Z50	Z50	Care involving use of rehabilitation procedures	30 21

Outcomes

- Social
 - Housing, WINZ, Immigration, Transport
- Clinical
 - Education, Triage, Palliative, Bereavement Support
- Includes wraparound support
 - Mental health
 - Disability

Where to from here?

- Acknowledgement that Pacific is a major part of DHB strategy
- Responsiveness to needs of Pacific
 - Eg Workforce (includes management)
- Not a complex problem – simple solutions
- What we are doing is working
 - Operating on a shoestring – but we have been creative (Primary Care Link RN)
- Lifecycle trends reflect what we know
- Help us to help our people



Capital & Coast
District Health Board
Kaitiaki Take Kōwhiri Māori

Fa'afetai tele lava

Lee & Team